

# Cancer Patterns & Diagnosis

Number Two in a Series

# Case History

Metastatic Breast Cancer  
With Toxic Heat and Essence vacuity

# Case Study

- **Patient:** 59 Y.O. Woman, Housewife.
- **Presenting Problem:** Breast Cancer originally diagnosed 1999, had surgery, radiotherapy and chemo, now metastasised.
- **Current Therapies:** She has just finished another round of chemotherapy.
- **Past History:** The patient was on HRT for 8 years. Mammograms have been done yearly since 1993. A mammogram taken 01/09/99 revealed a non-palpable peri-areola 12mm nodule and a fine needle aspiration produced evidence of neoplasia. Subsequent ultrasound revealed no other evidence of malignancies. The cells were stained and found to be oestrogen sensitive. Lymph nodes were revealed mastatic adenocarcinoma. She underwent a lumpectomy and axillary dissection on 06/09/99. A left mastectomy was performed on 10/09/99. On 03/09/99 Chemotherapy was begun.
- The patient was diagnosed with metastatic breast cancer in March 2002. The investigations showed small pulmonary metastases as well as liver metastases. There were also small sclerotic bone metastases on a bone scan. She was asymptomatic at the time. She began chemotherapy and the pulmonary metastases were subsequently very small and the liver had significant reduction in size of the metastases.
- By September of 2003 the liver was found to have substantial metastases with evidence of ascites.
- Urine analysis indicated elevated liver enzymes.

**1<sup>st</sup> consultation:** After a lengthy history taking and interview I asked about the current presenting problems. Patient had slight fever and urinary frequency with a burning sensation. She was agitated, had tinnitus and insomnia. None of the scans indicated any bladder metastases.

Tongue: Sticky yellow coat on a slightly swollen red body

Pulse: Rapid, thin and wiry

**Diagnosis:** Heat painful-urination syndrome. I also suspected Liver Fire involvement

**Treatment Principle:** Clear Heat, Drain Damp, regulate Liver and Drain Fire.

**Formulations:** Ba Zheng Tang, Long Dan Xie Gan Tang

**Prescription:** Bian Xu ~6gms, Che Qian Zi~19gms, Mu Tong~6gms, Qu Mai~6gms,

Da Huang~6gms, Zhi Zi~6gms, Fu Ling~10gms, Zhu Ling, Sheng Di~12gms, Zhi Mu~10gms, Dang Gui~10gms, Zhi Gan Cao ~3gms.

**Formula Analysis:** Bian Xu, Che Qian Zi, Mu Tong, Qu Mai drain Damp-Heat from the Bladder. Da Huang Clears Heat by moving downwards. Zhi Zi drains Damp-Heat, Fu Ling and Zhu Ling drain Damp (there was some evidence of oedema) Sheng Di and Zhi Mu protect the Yin from the Heat. Dang Gui was used to nourish Blood and regulate Liver Blood. Zhi Gan Cao harmonizes and protects the Stomach from the cold herbs.

**2<sup>nd</sup> Consultation:** After 5 days the Bladder and urination had returned to Normal so I began to explore the underlying pattern.

Pulse: Rapid, thin and slippery

Tongue: Reddish-purple, slightly swollen with yellow damp/greasy fur.

**Diagnosis:** Toxic Heat, Damp Heat, and Yin Xu

**Treatment Strategy:** Clear Heat, Drain Damp, Nourish and protect the Yin

**Prescription:** Huang Qin~10gms, Huang Lian~6gms, Zhi Shi~6gms,

Dan Pi~10gms,

Shi Song~6gms, Bai Shao~12gms, Lou Lu~6gms, Bie Jia~12gms,

Wu Gong~5gms

**Formula Analysis:** Huang Qin, Huang Lian clear Heat, Zhi Zi regulates and moves the Qi,

Dan Pi cools the Deficient Heat, Shi Song, Lou Lu and Wu Gong Clear toxic Heat and have some demonstrated anti-malignancy properties. Bai Shao softens the Liver; Bie Jia nourishes the Yin, which is injured by the Heat.

I also used “Pro-Brassica”~2 180mg capsules 2x daily. This is a commercial extract from brassica vegetables i.e. garlic, broccoli, cabbage, brussel sprouts and acts as an oestrogen blocker and “Curcuma”~4 500mg capsules 2 x a day. This is an extract of curcumae longa to clear toxic Heat.

**3rd Consultation:** The patient was less agitated, slept better, and had a more positive attitude. I continued the above formula and added Yi Ren~15gms to drain damp Heat, Bai Hua She She Gao~15gms and Ban Zhi Lian~8gms to resolve Toxic Heat and Huang Qi~15gms to strengthen and tonify the Qi and boost the immune system.

**Diagnosis:** Toxic Heat, Blood Stasis and Qi and Yin Xu

**4<sup>th</sup> & 5<sup>th</sup> Consultations:** Continue with above

Tongue: Yellow fur lighter and faint, less swollen and still reddish-purple.

Pulse: Rapid, Thin and slippery

**6<sup>th</sup> Consultation:** The patient was more energized and considerably more positive. I needed to constrain her from over enthusiasm and cautioned her to stick to the regime. I said she was better but needed to recognize she was still quite ill. I changed the formula to increase the immune boosting components.

**Diagnosis:** Still some toxic Heat, Blood Stasis and Qi and Yin Xu

**Base Formulation:**

This formula consists of 16 Chinese herbs: huang qi~15gms, ling zhi~ 12gms, Dang Gui~10gms, shu di huang~ 12gms, gou qi zi~10gms, nu zhen zi~10gms, bai hua she she cao~30gms, shi chuan~8gms, ban zhi lian~6gms, ban bian lian~6gms, long kui~10gms, she mei~6gms, mao zhua cao~6gms, hu zhang~8gms, quan shen~8gms, shui hong hua zi~12gms.

# Patterns

- Phlegm Heat
- Phlegm

# Phlegm Heat

- General Descriptions:
- This pattern is caused by coagulation of Phlegm and Heat. It can be seen in different stages of various diseases, such as each stage of externally contracted febrile diseases, or later stage of internal diseases. The pattern is usually of the Heat property and excess type.
- The focus here is on Internal Phlegm Heat caused by Yin Xu or Shi Heat

# Phlegm Heat

## Main Symptoms:

- Vexation, thirst, cough with yellow and sticky sputum;
- or vomiting when drinking water, Epigastric tenderness when pressing;
- or delirious speech and actions, irritability and insomnia.

# Phlegm Heat

## Clinical Manifestations:

- Body fever, vexation, thirst, asthma, cough with yellow and sticky sputum;
- or sore throat, hoarse voice, thirst, vexation;
- or body fever and redness, thirst with desire for drinks but vomiting when drinking, epigastric tenderness when pressing;
- or hectic fever, constipation, accumulation and stagnation of sputum, asthma and shortness of breath;
- or irritability, insomnia, disturbed mind state, delirious speech and actions.
- Yellow and sticky or yellow and moist-glossy tongue coat, wiry pulse.

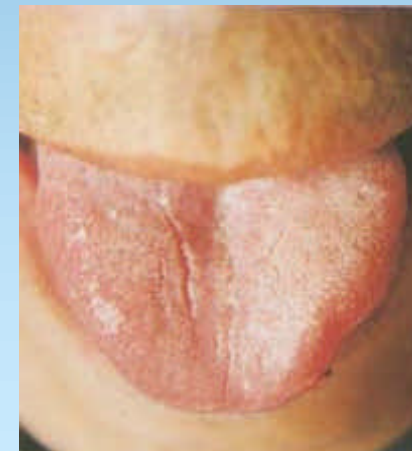
# Phlegm Heat

<b>Tongue Body</b>	<b>deep-red</b>
<b>Tongue Coat</b>	<b>thin, yellow, sticky and greasy</b>



**slightly dark red, with  
cracks on the surface, more  
on the right side**

**yellow, thick, moist and  
glossy**



# Phlegm Heat due to Yin Xu

- When Yin is injured due to Toxic Heat or lingering pathogens, deficiency Heat arises. Vacuity Heat rises, 'stewing' the Fluids and congealing them into Phlegm. This may lodge in the neck etc. to form nodules which may become malignant through Toxic Heat.
- Tongue: Red with scanty yellowish coat
- Pulse: Fine and Rapid

# Phlegm Heat due to Yin Xu



# Phlegm Heat due to Yin Xu

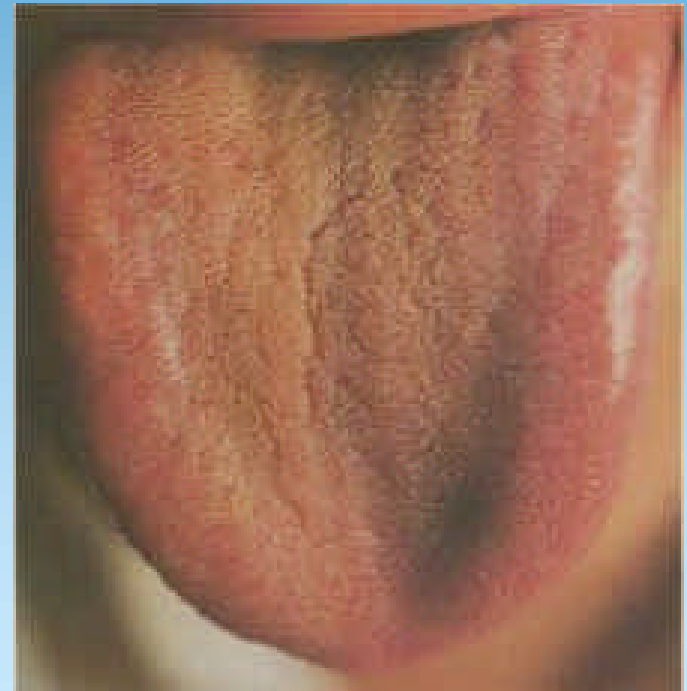
Formula:

Da Bu Yin Wan Jia Jin

# Phlegm Heat depressing the Lung

- Invasion of Evil Heat (pollution, cigarettes) combined with Qi and essence Xu (immune deficiency) engenders phlegm which obstructs Qi. Qi accumulates and creates Heat.
- Tongue: A yellow, slimy coat.
- Pulse: Wiry, slippery and rapid

# Phlegm Heat depressing the Lung



# Phlegm Heat depressing the Lung

Formulas:

- Lung Cancer formulas
- Qing Qi Hua Tan Wan

# Phlegm and Stasis mutually obstructing

- Blood and body Fluids share a common source and flow together. Enduring Phlegm obstruction may cause Blood Stasis, while enduring Blood Stasis may eventually result in Phlegm accumulation and nodulation.
- Signs: Lymph congestion and lymphoma
- Tongue: Dark and purple
- Pulse: Wiry and choppy

Phlegm and Stasis mutually obstructing



# Phlegm and Stasis mutually obstructing

Formulas: Xi Huang Wan Jia Jian

Ru Xiang, Mo Yao, Xi Huang, She Xiang, Xuan Shen, Xia Ku  
Cao, Zhe Bei Mu, Mao Gua Zi, Ban Xia, Mu Li

# Phlegm Damp

## General Descriptions:

- This pattern can be caused either by Spleen deficiency and retention of Water in the body due to over fatigue, improper diet, externally contracted pathogens, and internal injuries resulted from emotional disorders, or by generated Phlegm and Damp due to involved Spleen and Stomach in diseases of other *zang-fu* organs. It's usually of the Cold property and deficiency complicated with excess.

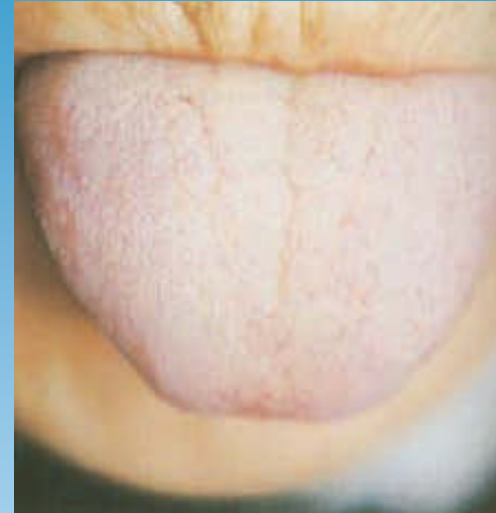
# Phlegm Damp

- ◆ Main Symptoms:
  - ◆ Feeling of fullness in the chest and epigastric region, nausea, vomiting, copious sputum.
  
  - ◆ Clinical Manifestations:
  - ◆ Feeling of fullness in the chest and epigastric region;
  - ◆ poor appetite, nausea, vomiting;
  - ◆ vertigo;
  - ◆ cough with copious sputum;
  - ◆ heaviness of the body;
  - ◆ mental weariness.
- Thick and greasy tongue coat, weak-floating and slippery pulse.

# Phlegm Damp

dark and purplish

white, thick and greasy



dark and purplish-red, with tooth prints in the margins and petechia

white, thick and greasy, yellow in some parts



# Phlegm Damp

Formula:

# Phlegm Rheum

## General Descriptions:

- Over exertion causes qi and Essence vacuity
- Western medications deplete the Yang and Yin
- Excessive worry and depression cause Qi to stagnate
- Fluids accumulate and congeal to Phlegm (both visible and invisible)

## Main Symptoms:

- Vertigo, poor mental function and confusion, palpitation, shortness of breath and emaciation
- Tongue: White, slimy coat
- Pulse: Wiry, slippery or deep and tight

# Phlegm Rheum



# Phlegm Rheum

Formulation: Ling Gui Zhu Gan Tang

Additions: Hou Po, Zhi Ke, Xiang Fu, Chen Pi, Ban Xia

With Kidney Qi Xu add Ji Sheng Shen Qi Wan

If excess of Evil Fluids, which is greater than vacuity pattern with hidden pulse add Gan Sui Ban Xia Tang

With constipation caused by Rheum obstruction use Ji Jiao Li Huang Wan.

# Phlegm Evils, Phlegm nodulation with Qi and Blood Vacuity

## General Descriptions:

- Pharmaceuticals tend to be cold and dispersing in nature and damage the Spleen / Stomach. Combined with Qi and Essence Xu the Spleen loses its transportation and transformation function.
- Qi Vacuity due to enduring disease leads to Blood Vacuity and Blood Stasis
- Qi and Blood fail to flow smoothly and Phlegm, nodules and tumours arise

# Phlegm Evils, Phlegm nodulation with Qi and Blood Vacuity

## Clinical Manifestations:

- Generalized swollen lymph glands, Tidal fever, night sweats, Vacuity irritation and agitation, insomnia, depression and possibly tinnitus
- Tongue: Red body (possibly purplish tinge) with a thin yellowish coat
- Pulse: Fine and Rapid

# Phlegm Evils, Phlegm nodulation with Qi and Blood Vacuity



# Phlegm Evils, Phlegm nodulation with Qi and Blood Vacuity

Formulation: Da Bu Yin Wan Jia Jian

Additions; Xuan Shen, Zhe Bei Mu, Xia Ku Cao, Hai Zao  
Kun Bu, Gan Cao